

AUREA 7615 COAXIAL

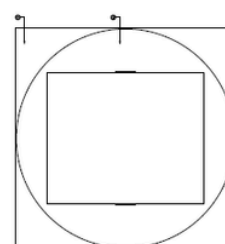
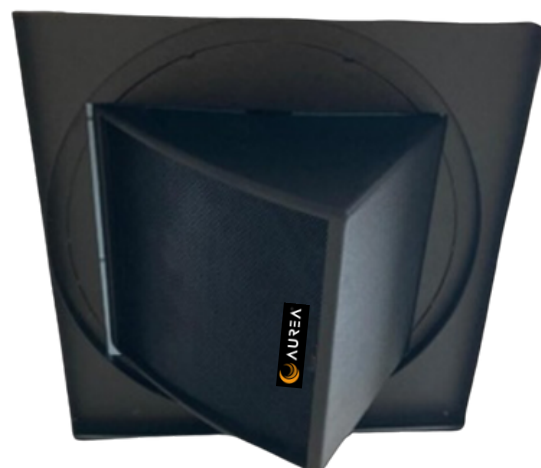
A 12" coaxial driver, 2-way full-range cinema surround speaker, designed for easy installation and optimized for modern multichannel 3D sound systems.

The enclosure is made of wood to achieve the lightest weight possible (15.5 Kg). With its **90° conical directivity**, it can be installed on ceilings or in standard on-wall applications.

We recommend installing this **300W 2-way speaker** with the optional 60x60 cm ceiling tile support, which includes pan/tilt adjustments.

SPECIFICATIONS

BASS:	1 x 12" coaxial speaker with 2.5" voice coil
TREBLE:	1 x 1" compression driver with 1.75" voice coil 16 ohm
HORN:	90° conical directivity
POWER:	300W AES/600W Prg. / 1600W peak. Nominal Impedance 8 ohm.
SENSITIVITY & SPL:	96 dB/1W/1m. SPL 121.4dB Continuous Leq
FREQUENCY RESPONSE:	(F3) 60Hz. to 20.000Hz
SIZE:	35.2 x 35.2 x 40 cm. Specially designed for a 60x60 cm ceiling tile space, along with an optional ceiling tile support.
WEIGHT:	Net 15.5 Kg



1 Placa Europea/European plate
Madera de chopo/Black poplar wood
2 Anillo reja/Grill ring
Chapa/Sheet esp/thk: 3mm

